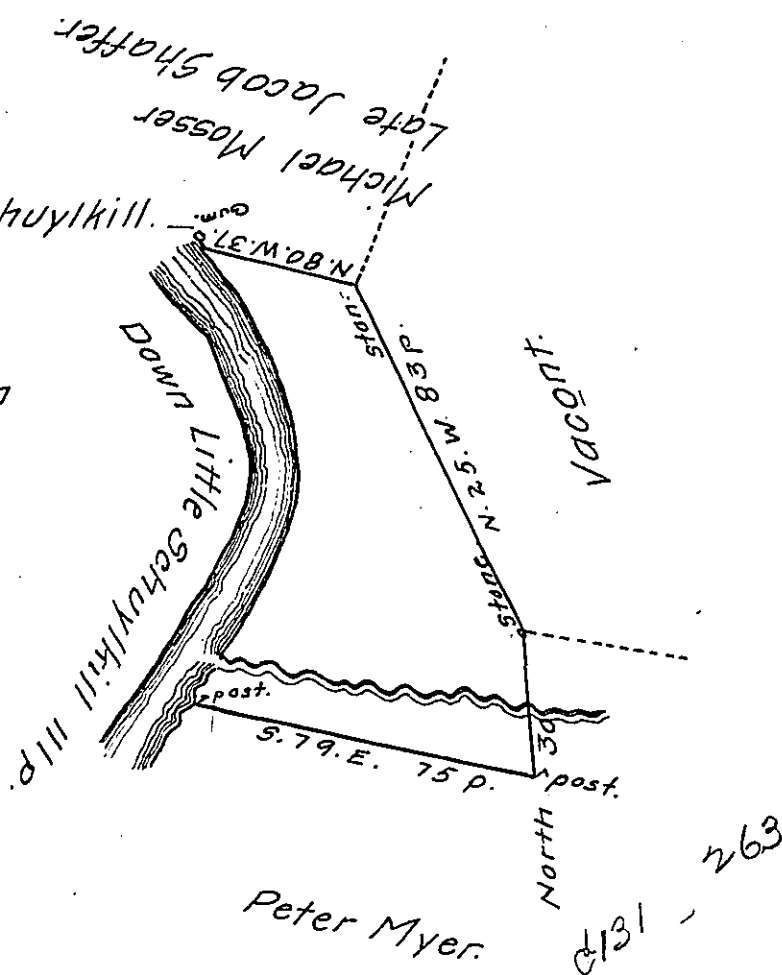


Beginning at Little Schuylkill.  
 S. 79 E. 15 to post.  
 North 30 Ston.-  
 N. 25. W. 83. to Ston.-  
 N. 80. W. 37. to Gum Down  
 Schuylkill -  
 S. E. 20.  
 S. 20 E. 32.  
 S. 27. W. 59. to the  
 Beginning



By Virtue of a warrant Dated the Eleventh day of  
 March, 1775 and Survey'd the Twenty fifth day of November,  
 1787 for Frederick Weyman the above d<sub>i</sub>scribed Tract of  
 Land Situate in Brunswick Township, Berks County on the  
 Easterly side of Little Schuylkill - Containing Twenty Six  
 acres and 109 perches and the allowance of six & Cent.  
 To Daniel Brodhead, Esqr., Henry Vanderslice. =  
 Surveyor General.

IN TESTIMONY that the above is a copy of the original remaining on file in  
 the Department of Internal Affairs of Pennsylvania, made  
 conformably to an Act of Assembly approved the 16th day of  
 February, 1833, I have hereunto set my Hand and caused  
 the Seal of -said Department to be affixed at Harrisburg,  
 this third day of August 1911.

*Henry Houch*  
 Secretary of Internal Affairs.